

MEMORANDUM FOR THE RECORD 22 JFT 01 Release Collected Fish at Lower Monumental Dam

SUBJECT: Released fish collected for barge transport due to high flows.

Narrative: On the afternoon of June 7, 2022, Lower Monumental Dam total river outflow reached approximately 206 kcfs. Due to the high river flow, the tug captain and Lower Monumental Dam staff felt it was unsafe to load the collected fish on the barge for transport. Historically, once flows exceed 180-190 kcfs, barge transport from Lower Monumental Dam becomes difficult and the risk to personnel and equipment too great. Fish that had been collected for transport were released (Table 1) and collection for the June 9 transport trip continued.

Table 1. Fish released by species and clip.

Clipped Yearling Chinook	2,894
Unclipped Yearling Chinook	2,696
Clipped Subyearling Chinook	8,287
Unclipped Subyearling Chinook	12,828
Clipped Steelhead	5,789
Unclipped Steelhead	2,696
Clipped Sockeye	50
Unclipped Sockeye	0
Combined Coho	2,894
Total	38,134

- A. Species – NA
- B. Origin – NA
- C. Length – NA
- D. Marks and tags – NA
- E. Marks and Injuries found on carcass – NA
- F. Future and Preventative Measures – Tug operators and Lower Monumental Dam staff will continue to communicate during scheduled barge trips to ensure personnel safety.
- G. Photos: Photos below.



Image 1. Water level at Lower Monumental Dam barge dock on June 7, 2022.

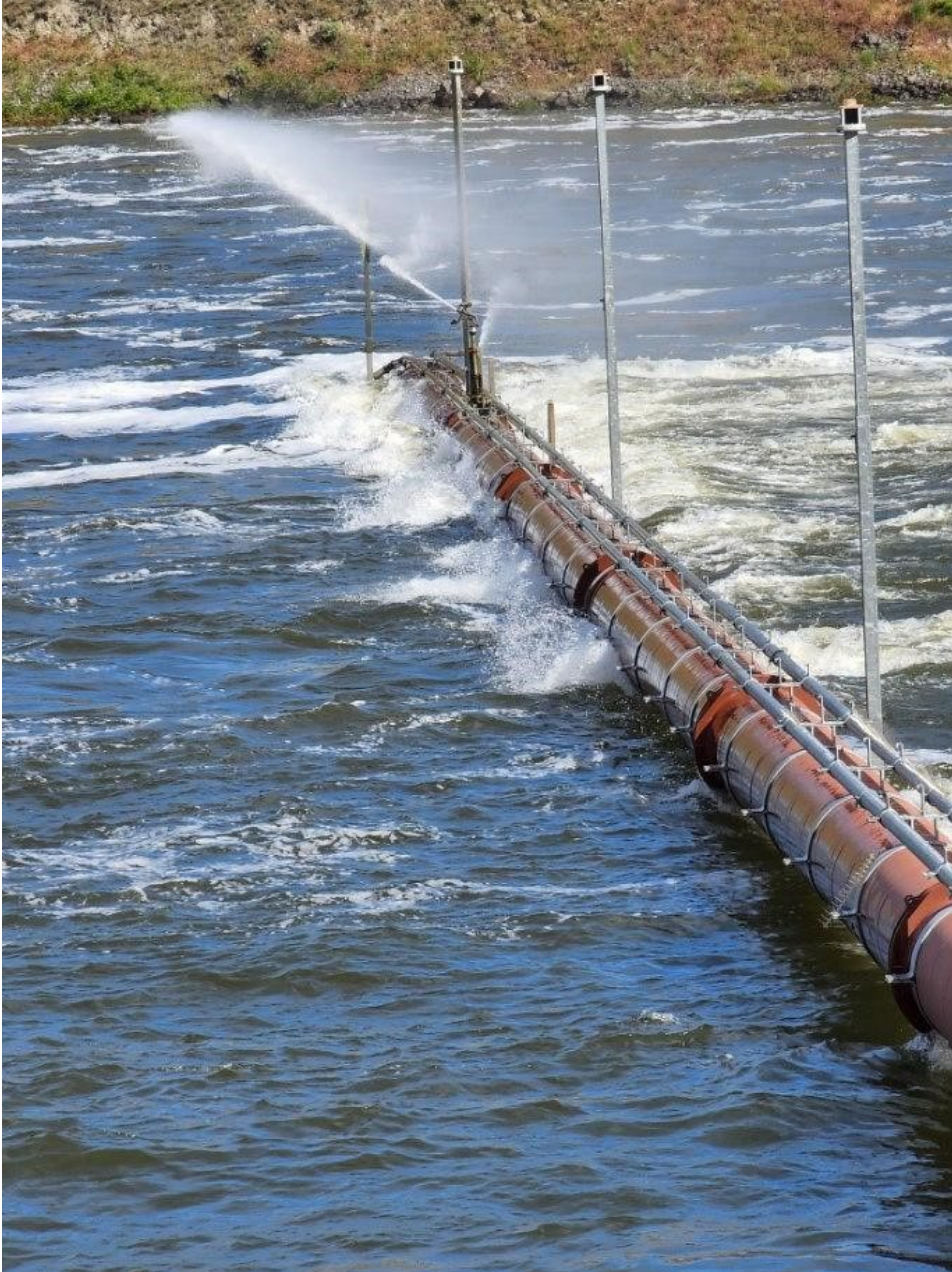


Image 2. Water level at Lower Monumental Dam juvenile outfall pipe on June 7, 2022.

Scott St. John
CENWW Transportation Coordinator
Walla Walla District Army Corps of Engineers
(509) 527-7122
scott.j.stjohn@usace.army.mil